

## INE-W927HD software update procedure: ver 1.302



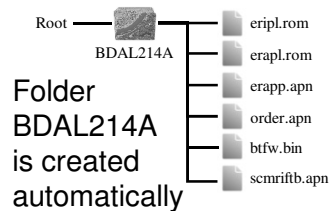
### Update procedure

The INE-W927HD can be updated via USB connection (see connection diagram below). Before starting to update, please check following notes. The download file is compressed in zip format. The contents of the download need to be extracted to a freshly formatted USB memory (FAT32).

#### Update file contents

- BDAL214A
- eripl.rom (around 20kB)
  - erapl.rom (around 25MB)
  - erapp.com (around 67MB)
  - order.apn (around 1kB)
  - btfw.bin (around 1.3MB)
  - scmritfb.apn (around 1kB)

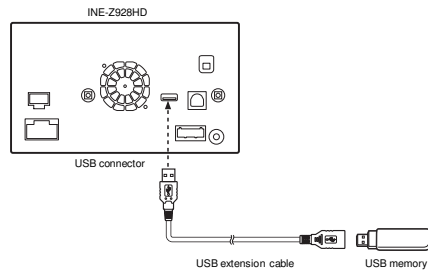
#### Update file storage place



#### Notes

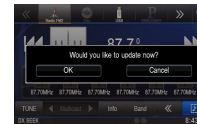
- Do NOT use the compressed file for update, otherwise the INE-W927HD cannot recognize the files.
  - Do NOT change folder name and file names, otherwise the INE-W927HD cannot recognize the files.
  - Do NOT put BDAL214A folder into another folder.
  - Do NOT store any other folders/files on the USB memory.
  - Do NOT remove the USB memory while updating.
  - Do NOT update while driving.
  - Do NOT press any buttons while updating.
  - Do NOT turn off vehicle's ignition or head unit's power switch while updating.
- Modern vehicles will shut down the ignition (ACC) after some time if the engine is not running.  
If you are not sure if this applies to your car, leave the engine idling while the update is in progress.

#### Connection

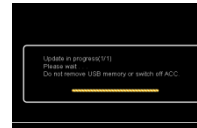


### Install update software

- 1 Extract / unzip the downloaded file to the **empty** USB memory. It can't be an any other folder
- 2 Connect USB memory to USB connector of the INE-W927HD.
- 3 Press "OK" button when update message appears on the screen.



During the update, a progress bar will appear. It will take around 10 minutes.



- 4 When the software update is finished, the INE-W927HD will restart automatically.



- 5 Turn off vehicle's ignition, remove the USB memory and turn the ignition back on to finalize the software update. To confirm the version, enter into settings menu. Select General and then About. Software version number displayed as "1.302" in SETUP menu of the INE-W927HD, this update procedure has succeeded.

